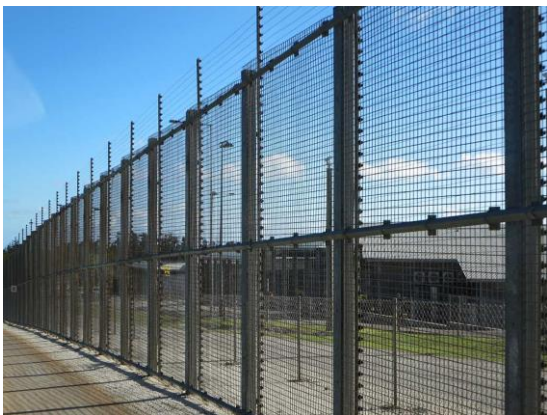


Supporting confinement facilities to detect and mitigate COVID-19

CONTRIBUTOR: *Laura Kliethermes, Grants Transformation Director, Missouri Department of Health and Senior Services*

CATEGORY: **Epidemiology and Laboratory Capacity (ELC)**

The Missouri Department of Health and Senior Services partnered with local units of government in Missouri to develop a multi-pronged approach in its efforts to detect and mitigate COVID-19 in Missouri's confinement facilities.



The “What”

The Missouri Department of Health and Senior Services (DHSS) has established partnerships with 65 local units of government in Missouri and the Missouri Departments of Corrections, Social Services and Mental Health to detect and mitigate COVID-19 in Missouri's confinement facilities by utilizing funding provided through the Epidemiology and Laboratory Capacity for the Prevention and Control of Emerging Infectious Diseases (ELC) program.

DHSS has developed a multi-pronged approach in its efforts to detect and mitigate COVID-19 in Missouri's confinement facilities:

- Direct contracts have been established with local units of government to provide funding to jails, police lockups and juvenile detention centers across the state. Funds are being utilized to improve practices and protocols around the detection and mitigation of COVID-19 and other infectious diseases. Participating contractors will obtain testing, medical, and laboratory supplies; HVAC and air purification services and systems; infrastructure modifications; office and cleaning supplies and services; training and education resources; personnel; and/or software and equipment upgrades to aid in their detection and mitigation efforts. To reach these target populations, DHSS formed stakeholder partnerships with the Missouri Associations of Counties and Councils of Government.



- Interagency spending agreements have been established with sister state agencies including the Missouri Departments of Corrections, Social Services and Mental Health to implement and improve COVID-19 and infectious disease mitigation in adult prisons, juvenile facilities, and treatment centers.
 - The Missouri Department of Corrections has contracted with Recidiviz to complete a series of sentencing planning sessions, develop and implement technology tools, and implement changes to policies and practices informed by ongoing data-driven analyses to safely reduce parole and probation populations as a means to mitigate the spread of COVID-19 in adult prisons.
 - The Missouri Departments of Social Services and Mental Health will enhance COVID-19 mitigation efforts by purchasing personal protective equipment and products to effectively clean and sanitize confinement facilities and educate staff on mitigation and detection best practices.

The “So What”

The impact of these efforts is the immediate and long-term improvement of the health of confinement facility detainees, staff, visitors, and their communities through improved COVID-19 and infectious disease mitigation and detection protocols, procedures, and education.

By improving protocols, practices, and procedures COVID-19 and infectious disease transmission will continue to be limited throughout Missouri’s confinement facilities long-term.

The “Now What”

By improving protocols, practices, and procedures through infrastructure changes to enhance social distancing and isolation, HVAC improvements to improve air quality, providing cleaning and sanitation equipment and education on effective mitigation strategies and practices, COVID-19 and infectious disease transmission will continue to be limited throughout Missouri’s confinement facilities long-term.

Additionally, the Missouri Department of Corrections’ implementation of protocols and procedures to safely reduce parole and probation populations will have a

lasting impact on disease mitigation by enhancing distancing in Missouri’s adult prisons.

Funding for this effort will end on July 31, 2024; however, funding provided through the ELC Detection and Mitigation of COVID-19 in Confinement Facilities cooperative agreement will continue to have long-lasting effects on mitigation procedures and practices in confinement facilities.

Changes to ELC funding will prohibit expansion to other confinement facilities not currently participating in the funding opportunity(ies); however, positive impacts being made in participating facilities will continue.