

# Expanding surveillance systems in the CNMI (Saipan, Tinian, and Rota)



CONTRIBUTOR: *Portia Tomokane, Commonwealth Healthcare Corporation, Epidemiologist and Laboratory Capacity Program*

CATEGORY: **Epidemiology & Laboratory Capacity (ELC)**

CATEGORY: **Nationally Notifiable Diseases Surveillance System**

The Commonwealth of the Northern Mariana Islands (CNMI) is working hard to build capacity, streamline data reporting, and improve data dissemination. These enhancements helped to quickly detect and respond to an influenza outbreak in 2022.

## The “What”

The Commonwealth of the Northern Mariana Islands (CNMI) is focused on addressing the following:

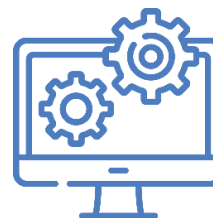
- Streamlining data by working on data extraction from the electronic health record (EHR).
- Building local capacity and data analysis skills by holding trainings with internal partners.
- Reporting nationally notifiable diseases (NNDs) and syndromes by working with all the internal providers on reporting these through a consult system within the EHR. Also, engaging external providers for proper and timely reporting of all NNDs and syndromes. They have increased sentinel sites from 8 to 9 and are working on the 10<sup>th</sup> to represent a broader population within the CNMI.
- Disseminating data to internal and external partners by enhancing their weekly report with syndromic data and select NNDs as well as including highlights from various internal partners from other program areas (e.g., Health and Vital Statistics Office [HVS], Sexually Transmitted Diseases [STD], and Overdose Data to Action [OD2A]).

## The “So What”

Better reporting of NNDs and Syndromes along with data dissemination allows the program to monitor and track trends and outbreaks in real-time. For example, in 2022, the CNMI had an early outbreak of Influenza A (identified through diagnostic laboratory testing). The weekly report detected this early warning; therefore, they were able to involve population health programs and immunization programs, as well as reach out to the community in the CNMI via the Commonwealth Healthcare Corporation (CHCC) Communications Department.

## The “Now What”

CHCC is working on the annual report for NNDs and syndromes captured within the CNMI (Saipan, Tinian and Rota). The hope is that other internal partners and program areas will also create quarterly/annual reporting to showcase the CNMI's disease trends. Long-term workforce sustainability is key to success.



**\$** Funding source: This work was supported in part by the Centers for Disease Control and Prevention (CDC) cooperative agreement #NU38OT000297. Its contents are solely the responsibility of the authors and do not necessarily reflect the views of the CDC.



More stories are available at [stories.cste.org](https://stories.cste.org)

SUBMITTED JUNE 2023